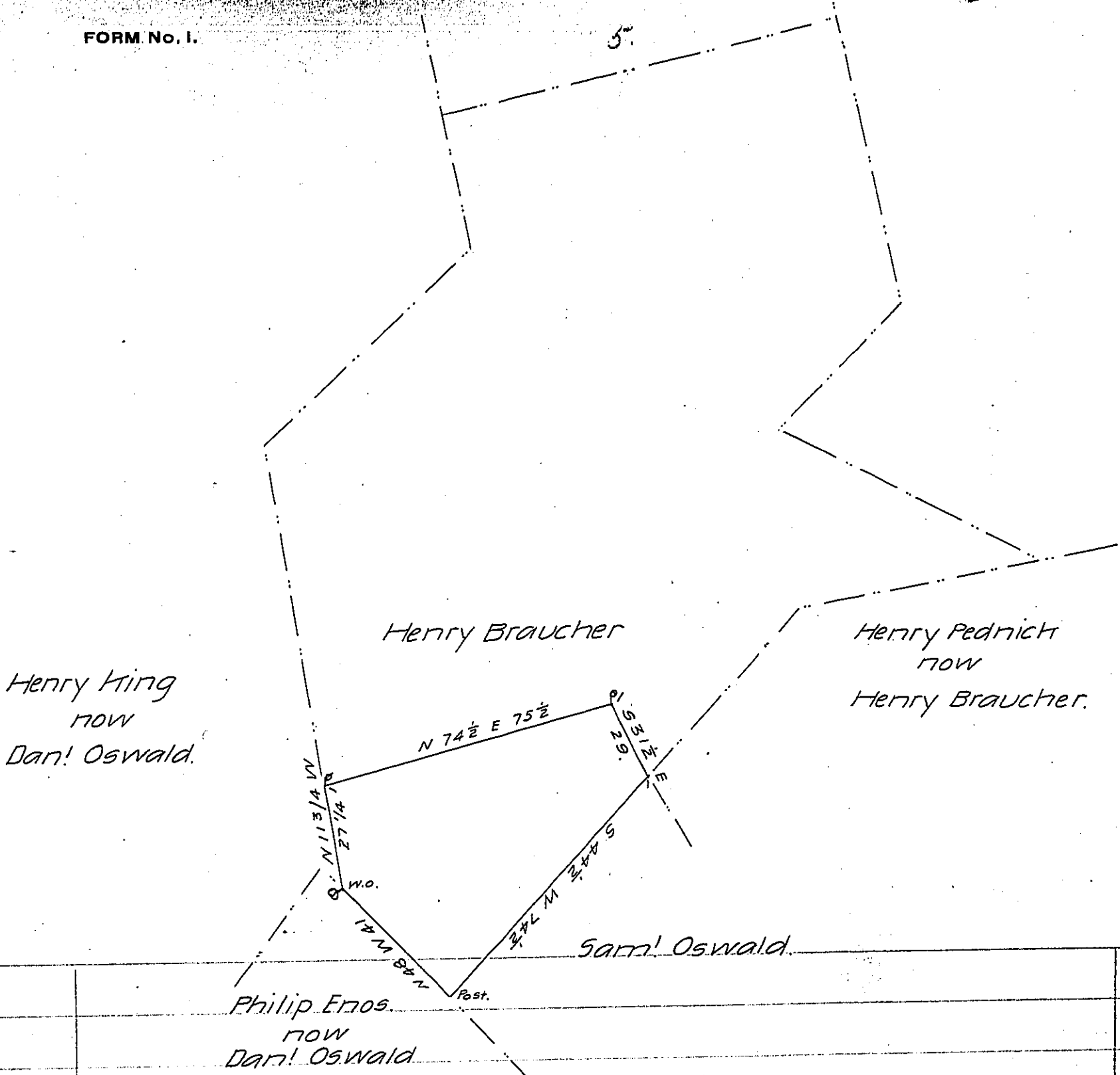


C-157



Draft of a tract of land situate in Lynn township Lehigh County, Containing 21 ac. 145 ps. & allowance of 6 pc. Being part of a larger tract of 154 a 10 ps. & allowance, originally surveyed by virtue of an application to Adam Creits No 3765 dated December 19th 1768, the said balance of tract being now returned for Samuel Oswald.

Geo. Blank C.S.

To J. M. Campbell Esq.
Surveyor General.

IN TESTIMONY that the above is a copy of the original remaining on file in the Department of Internal Affairs of Pennsylvania, made conformably to an Act of Assembly approved the 16th day of February, 1833, I have hereunto set my Hand and caused the Seal of said Department to be affixed at Harrisburg, this twentieth day of June 1906.

George D. Brown
Secretary of Internal Affairs.